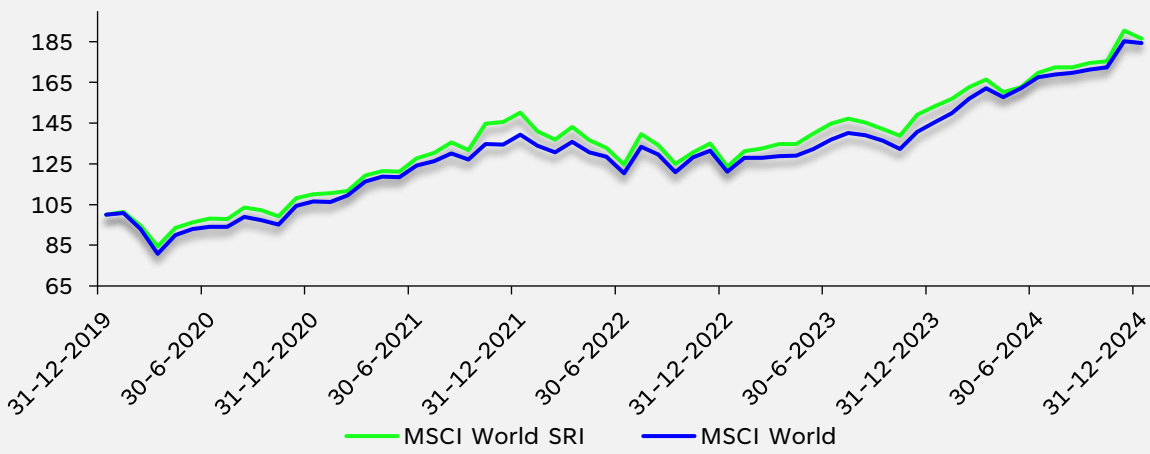
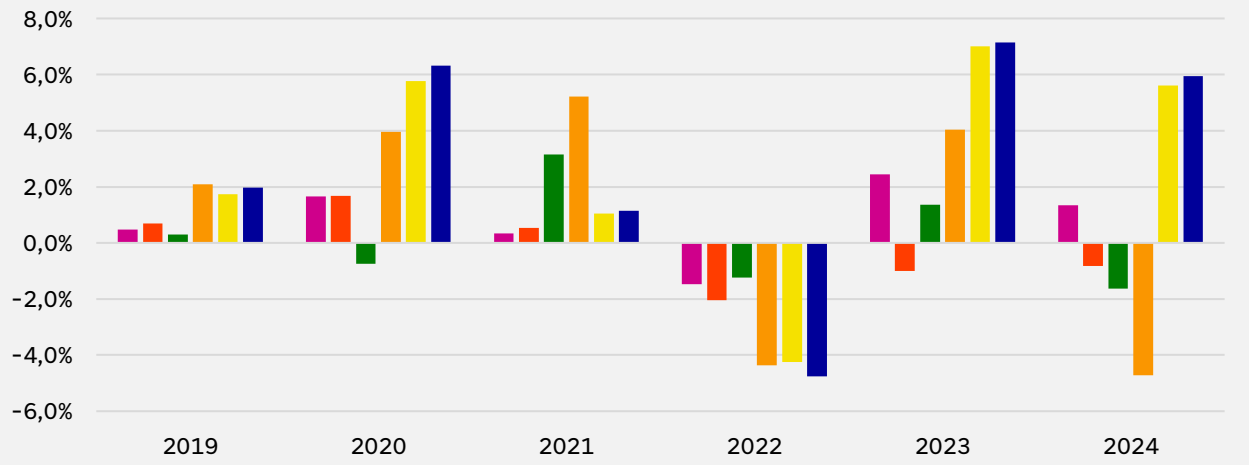


# Rendementen ESG-benchmarks versus reguliere benchmarks

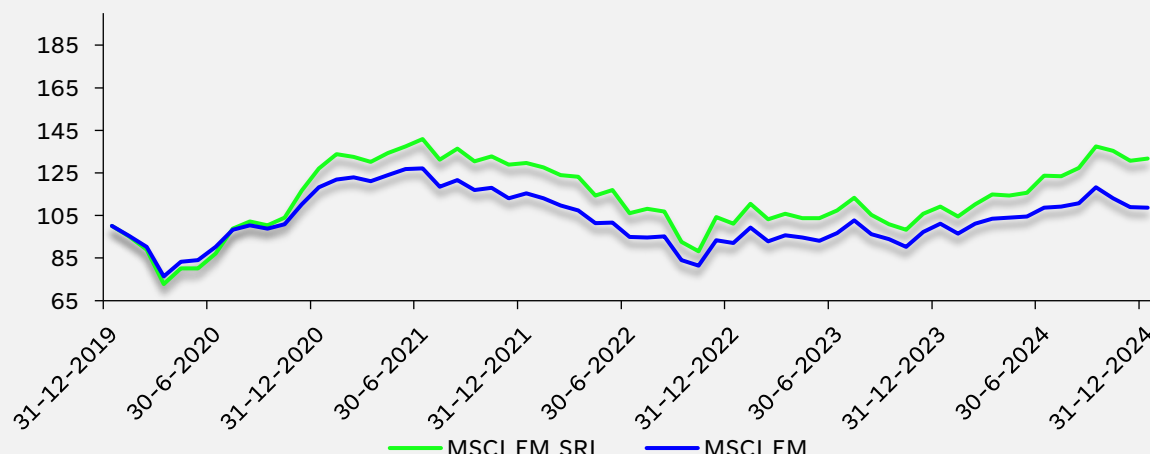
## Q4 2024

**Figuur 1: Aandelen ontwikkelde landen**


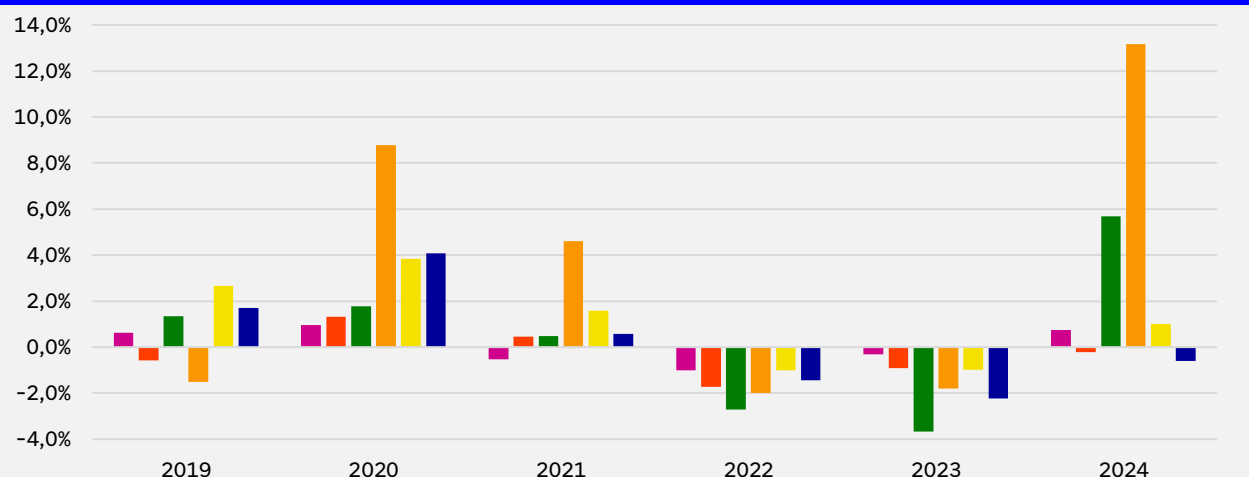
Rendement	Q	1Y	3Y	5Y	Volatiliteit	3Y	5Y
ESG	6,9%	21,8%	7,5%	13,3%		15,6%	16,1%
Regulier	7,6%	26,9%	9,8%	13,0%		14,3%	15,6%
Delta	-0,7%	-5,1%	-2,3%	0,3%		1,3%	0,5%

**Figuur 2: ESG Varianten t.o.v. reguliere MSCI World Index**


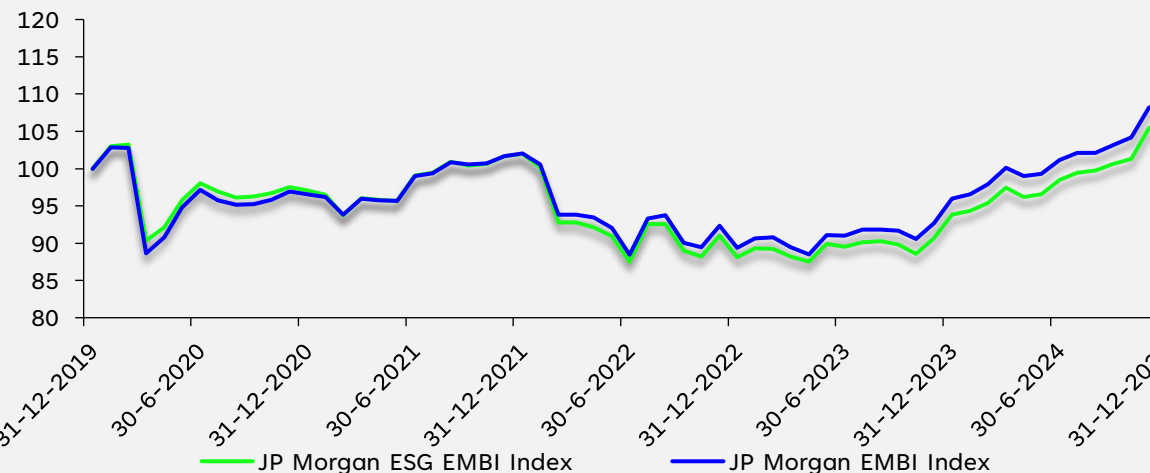
■ MSCI World ESG Screened	■ MSCI World ESG Enhanced Focus
■ MSCI World ESG Leaders	■ MSCI World SRI
■ MSCI World Climate Change CTB	■ MSCI World Climate Change PAB

**Figuur 3: Aandelen opkomende landen**


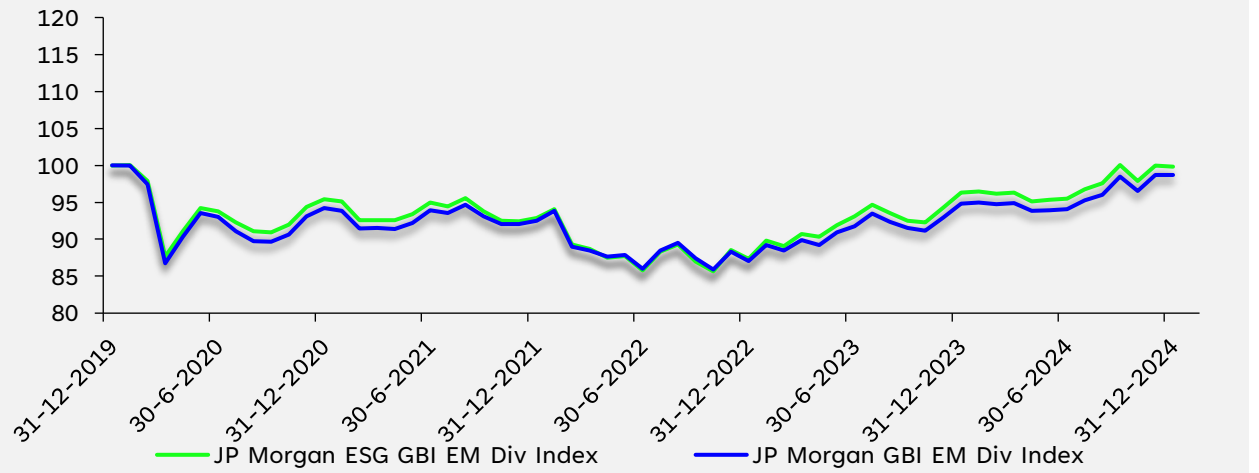
Rendement	Q	1Y	3Y	5Y	Volatiliteit	3Y	5Y
ESG	-4,1%	20,7%	0,5%	5,7%		20,5%	21,9%
Regulier	-8,0%	7,5%	-1,9%	1,7%		17,7%	18,5%
Delta	3,9%	13,2%	2,4%	4,0%		2,7%	3,4%

**Figuur 4: ESG Varianten t.o.v. reguliere MSCI EM Index**


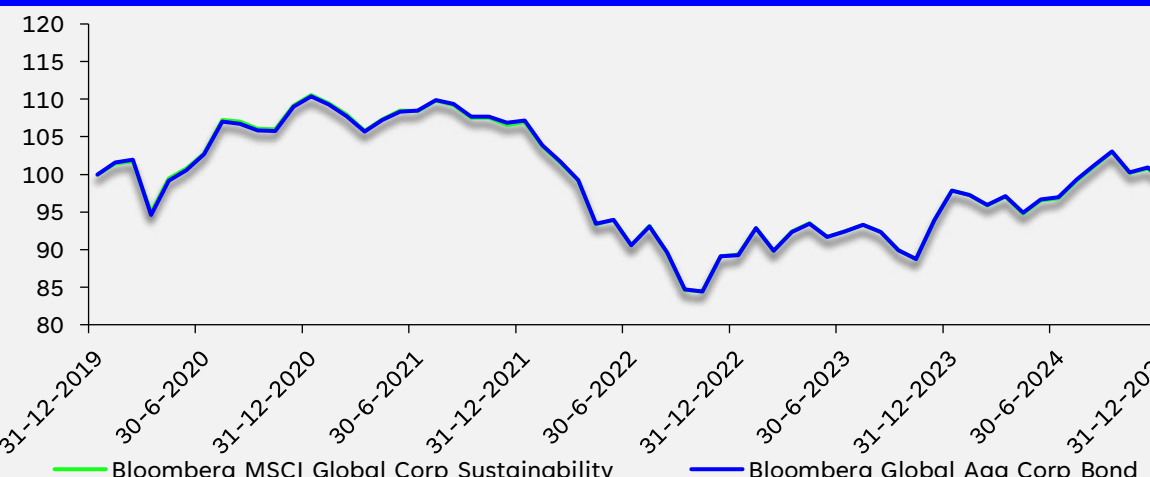
■ MSCI EM ESG Screened	■ MSCI EM ESG Enhanced Focus
■ MSCI EM ESG Leaders	■ MSCI EM SRI
■ MSCI EM Climate Change CTB	■ MSCI EM Climate Change PAB

**Figuur 5: EMD HC**


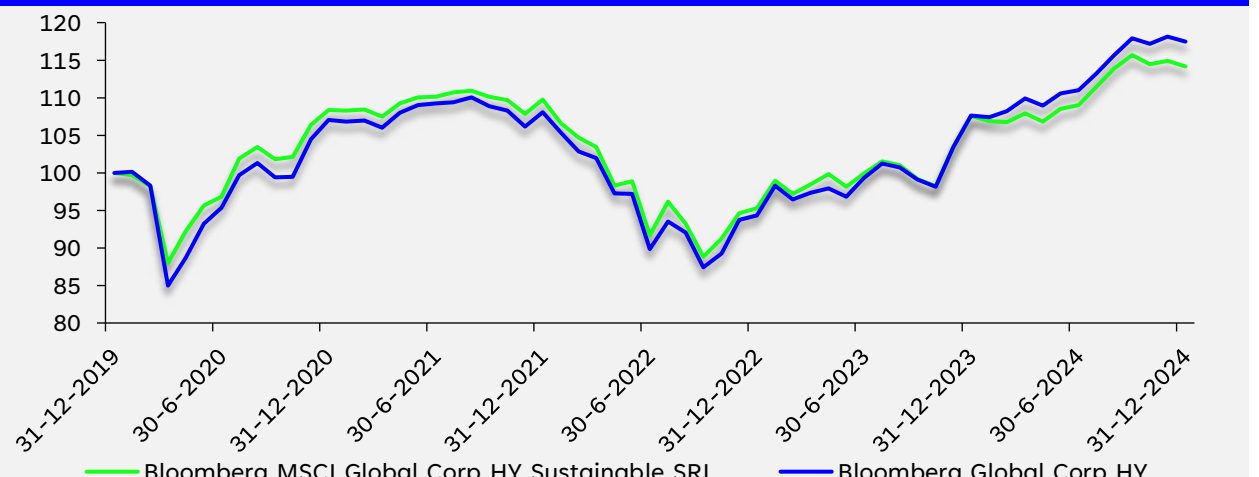
Rendement	Q	1Y	3Y	5Y	Volatiliteit	3Y	5Y
ESG	5,2%	12,8%	1,3%	1,1%		8,4%	9,4%
Regulier	5,7%	13,6%	2,2%	1,7%		8,2%	9,6%
Delta	-0,5%	-0,9%	-1,0%	-0,6%		0,3%	-0,3%

**Figuur 6: EMD LC**


Rendement	Q	1Y	3Y	5Y	Volatiliteit	3Y	5Y
ESG	-0,2%	3,7%	2,4%	0,0%		6,4%	7,7%
Regulier	0,3%	4,2%	2,2%	-0,3%		6,1%	7,8%
Delta	-0,5%	-0,5%	0,2%	0,2%		0,3%	-0,1%

**Figuur 7: Bedrijfsobligaties Global**


Rendement	Q	1Y	3Y	5Y	Volatiliteit	3Y	5Y
ESG	-4,1%	0,9%	-2,6%	-0,3%		9,9%	9,1%
Regulier	-4,0%	1,1%	-2,6%	-0,2%		9,9%	9,2%
Delta	-0,1%	-0,2%	0,0%	0,0%		0,0%	-0,1%

**Figuur 8: High yield Global**


Rendement	Q	1Y	3Y	5Y	Volatiliteit	3Y	5Y
ESG	-1,3%	6,2%	1,3%	2,7%		9,6%	9,9%
Regulier	-0,4%	9,2%	2,8%	3,3%		9,5%	10,8%
Delta	-1,0%	-3,0%	-1,5%	-0,6%		0,0%	-0,9%

- Figuur 1: MSCI World Index en MSCI World SRI Index, in EUR unhedged.
- Figuur 2: Verschil in rendement van verschillende MSCI World ESG varianten t.o.v. MSCI World Index
- Figuur 3: MSCI Emerging Markets Index en MSCI Emerging Markets SRI Index, in USD unhedged.
- Figuur 4: Verschil in rendement van verschillende MSCI EM ESG varianten t.o.v. MSCI EM Index
- Figuur 5: JPMorgan EMBI Global Diversified en JPMorgan ESG EMBI Global Diversified, in EUR unhedged.
- Figuur 6: JPMorgan GBI-EM GIB Diversified (LC) Index en JPMorgan ESG GBI-EM GIB Diversified (LC) Index, in EUR unhedged.
- Figuur 7: Bloomberg Global Aggregate Corporate Bond Index en Bloomberg MSCI Global Corporate Sustainability Index, in USD, unhedged.
- Figuur 8: Bloomberg Global Corporate High Yield Index en Bloomberg MSCI Global Corporate High Yield Sustainable SRI Index, in USD, unhedged.

Mocht u vragen hebben of mocht u zich willen aanmelden voor de wekelijkse e-mailservice, dan kunt u ons bereiken via [investments@sprenkels.nl](mailto:investments@sprenkels.nl) of [www.sprenkels.nl](http://www.sprenkels.nl)