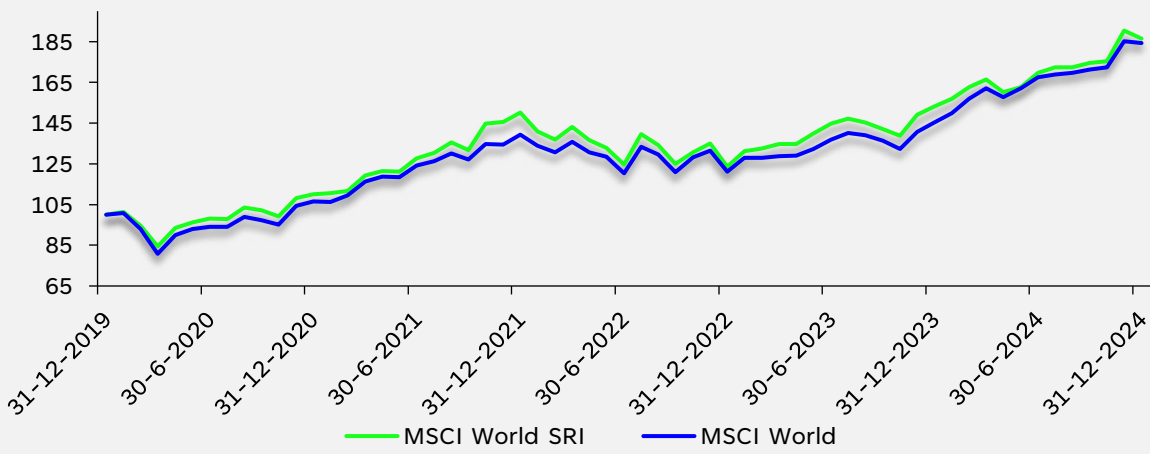
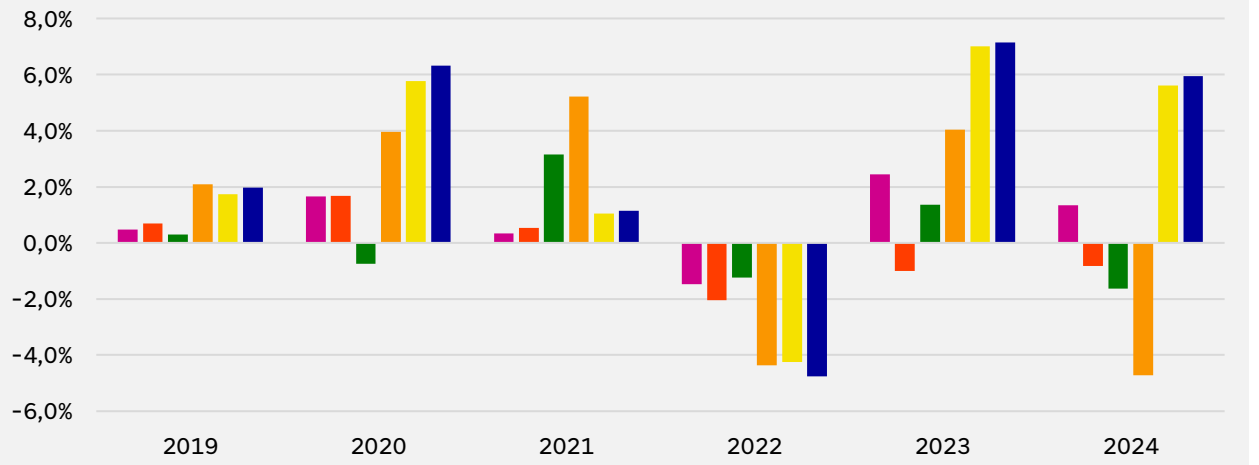


Rendementen ESG-benchmarks versus reguliere benchmarks

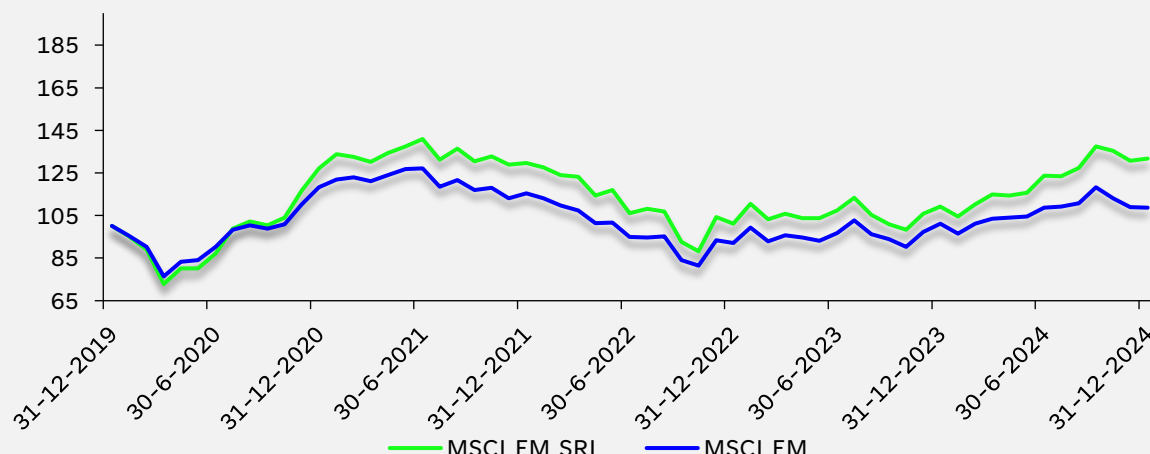
Q4 2024

Figuur 1: Aandelen ontwikkelde landen


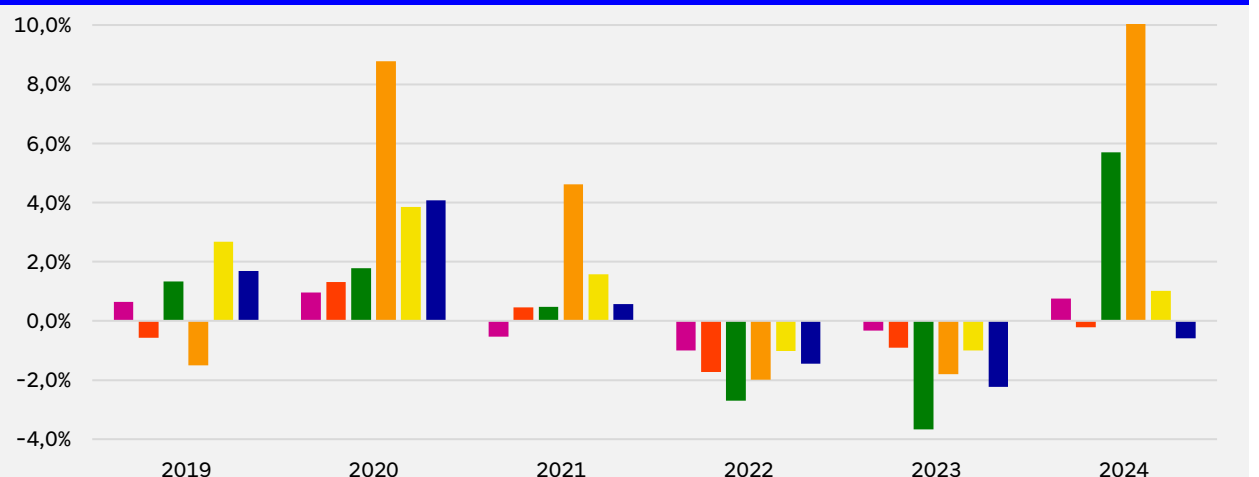
| Rendement | Q | 1Y | 3Y | 5Y | Volatiliteit | 3Y | 5Y |
|-----------|-------|-------|-------|-------|--------------|-------|-------|
| ESG | 6,9% | 21,8% | 7,5% | 13,3% | | 15,6% | 16,1% |
| Regulier | 7,6% | 26,9% | 9,8% | 13,0% | | 14,3% | 15,6% |
| Delta | -0,7% | -5,1% | -2,3% | 0,3% | | 1,3% | 0,5% |

Figuur 2: ESG Varianten t.o.v. reguliere MSCI World Index


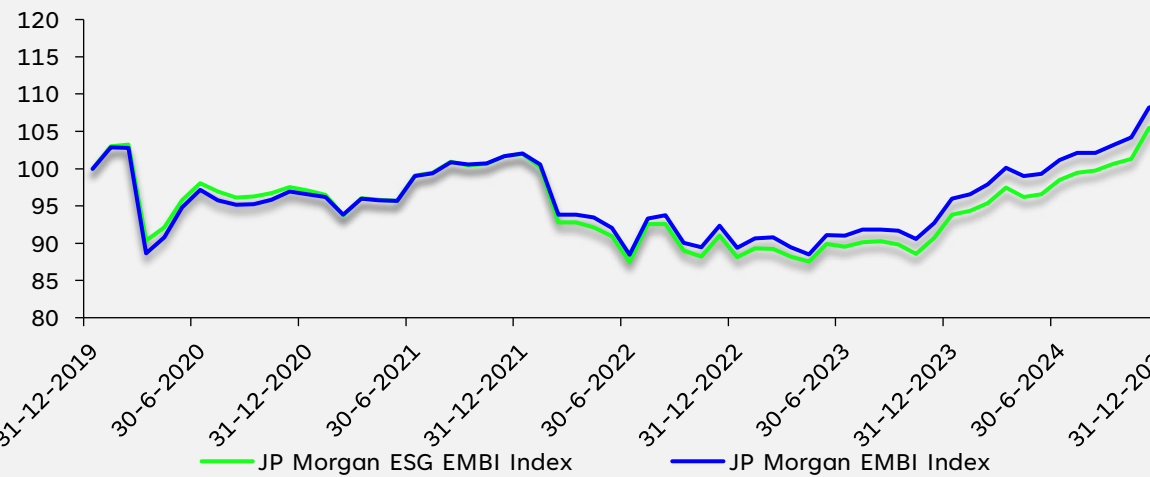
| | |
|---------------------------------|---------------------------------|
| ■ MSCI World ESG Screened | ■ MSCI World ESG Enhanced Focus |
| ■ MSCI World ESG Leaders | ■ MSCI World SRI |
| ■ MSCI World Climate Change CTB | ■ MSCI World Climate Change PAB |

Figuur 3: Aandelen opkomende landen


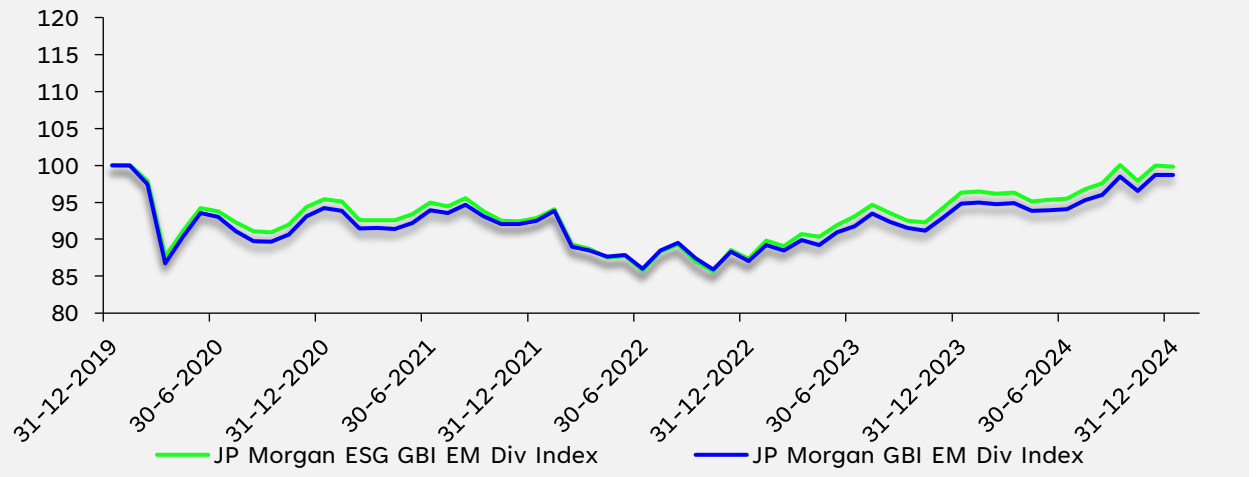
| Rendement | Q | 1Y | 3Y | 5Y | Volatiliteit | 3Y | 5Y |
|-----------|-------|-------|-------|------|--------------|-------|-------|
| ESG | -4,1% | 20,7% | 0,5% | 5,7% | | 20,5% | 21,9% |
| Regulier | -8,0% | 7,5% | -1,9% | 1,7% | | 17,7% | 18,5% |
| Delta | 3,9% | 13,2% | 2,4% | 4,0% | | 2,7% | 3,4% |

Figuur 4: ESG Varianten t.o.v. reguliere MSCI EM Index


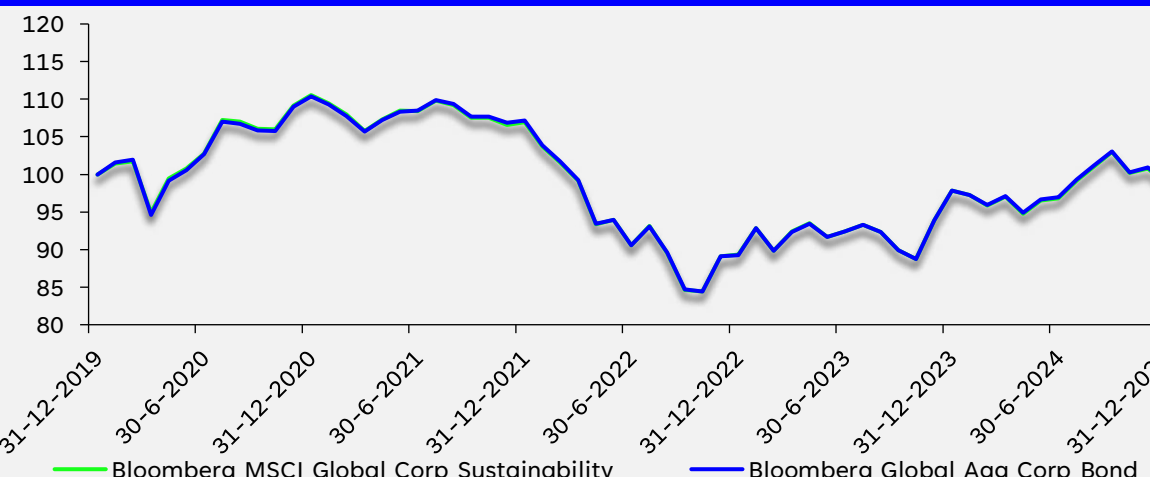
| | |
|------------------------------|------------------------------|
| ■ MSCI EM ESG Screened | ■ MSCI EM ESG Enhanced Focus |
| ■ MSCI EM ESG Leaders | ■ MSCI EM SRI |
| ■ MSCI EM Climate Change CTB | ■ MSCI EM Climate Change PAB |

Figuur 5: EMD HC


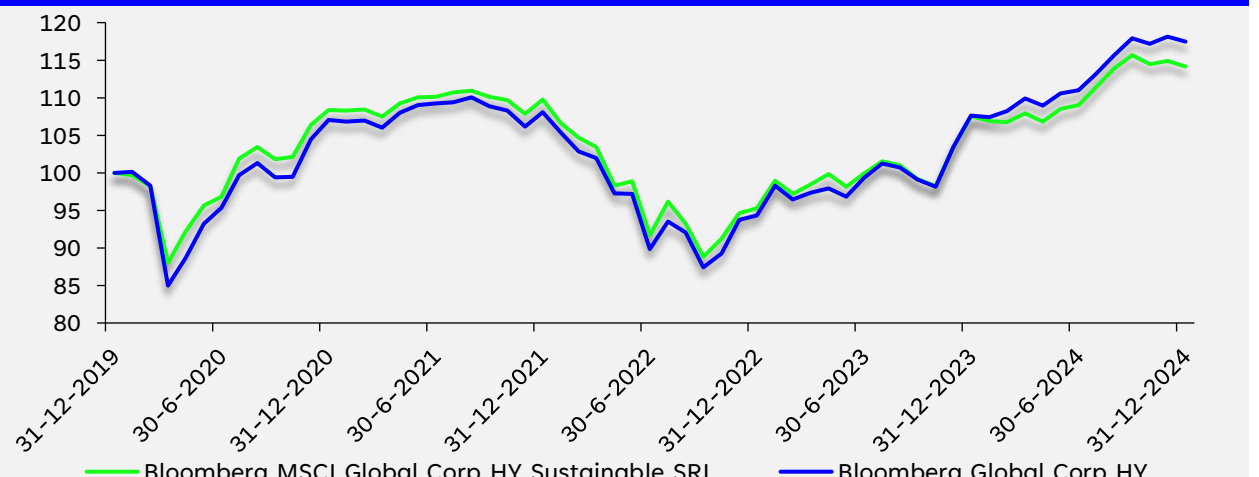
| Rendement | Q | 1Y | 3Y | 5Y | Volatiliteit | 3Y | 5Y |
|-----------|-------|-------|-------|-------|--------------|------|-------|
| ESG | 5,2% | 12,8% | 1,3% | 1,1% | | 8,4% | 9,4% |
| Regulier | 5,7% | 13,6% | 2,2% | 1,7% | | 8,2% | 9,6% |
| Delta | -0,5% | -0,9% | -1,0% | -0,6% | | 0,3% | -0,3% |

Figuur 6: EMD LC


| Rendement | Q | 1Y | 3Y | 5Y | Volatiliteit | 3Y | 5Y |
|-----------|-------|-------|------|-------|--------------|------|-------|
| ESG | -0,2% | 3,7% | 2,4% | 0,0% | | 6,4% | 7,7% |
| Regulier | 0,3% | 4,2% | 2,2% | -0,3% | | 6,1% | 7,8% |
| Delta | -0,5% | -0,5% | 0,2% | 0,2% | | 0,3% | -0,1% |

Figuur 7: Bedrijfsobligaties Global


| Rendement | Q | 1Y | 3Y | 5Y | Volatiliteit | 3Y | 5Y |
|-----------|-------|-------|-------|-------|--------------|------|-------|
| ESG | -4,1% | 0,9% | -2,6% | -0,3% | | 9,9% | 9,1% |
| Regulier | -4,0% | 1,1% | -2,6% | -0,2% | | 9,9% | 9,2% |
| Delta | -0,1% | -0,2% | 0,0% | 0,0% | | 0,0% | -0,1% |

Figuur 8: High yield Global


| Rendement | Q | 1Y | 3Y | 5Y | Volatiliteit | 3Y | 5Y |
|-----------|-------|-------|-------|-------|--------------|------|-------|
| ESG | -1,3% | 6,2% | 1,3% | 2,7% | | 9,6% | 9,9% |
| Regulier | -0,4% | 9,2% | 2,8% | 3,3% | | 9,5% | 10,8% |
| Delta | -1,0% | -3,0% | -1,5% | -0,6% | | 0,0% | -0,9% |

- Figuur 1: MSCI World Index en MSCI World SRI Index, in EUR unhedged.
- Figuur 2: Verschil in rendement van verschillende MSCI World ESG varianten t.o.v. MSCI World Index
- Figuur 3: MSCI Emerging Markets Index en MSCI Emerging Markets SRI Index, in USD unhedged.
- Figuur 4: Verschil in rendement van verschillende MSCI EM ESG varianten t.o.v. MSCI EM Index
- Figuur 5: JPMorgan EMBI Global Diversified en JPMorgan ESG EMBI Global Diversified, in EUR unhedged.
- Figuur 6: JPMorgan GBI-EM GIB Diversified (LC) Index en JPMorgan ESG GBI-EM GIB Diversified (LC) Index, in EUR unhedged.
- Figuur 7: Bloomberg Global Aggregate Corporate Bond Index en Bloomberg MSCI Global Corporate Sustainability Index, in USD, unhedged.
- Figuur 8: Bloomberg Global Corporate High Yield Index en Bloomberg MSCI Global Corporate High Yield Sustainable SRI Index, in USD, unhedged.

Mocht u vragen hebben of mocht u zich willen aanmelden voor de wekelijkse e-mailservice, dan kunt u ons bereiken via investments@sprenkels.nl of www.sprenkels.nl