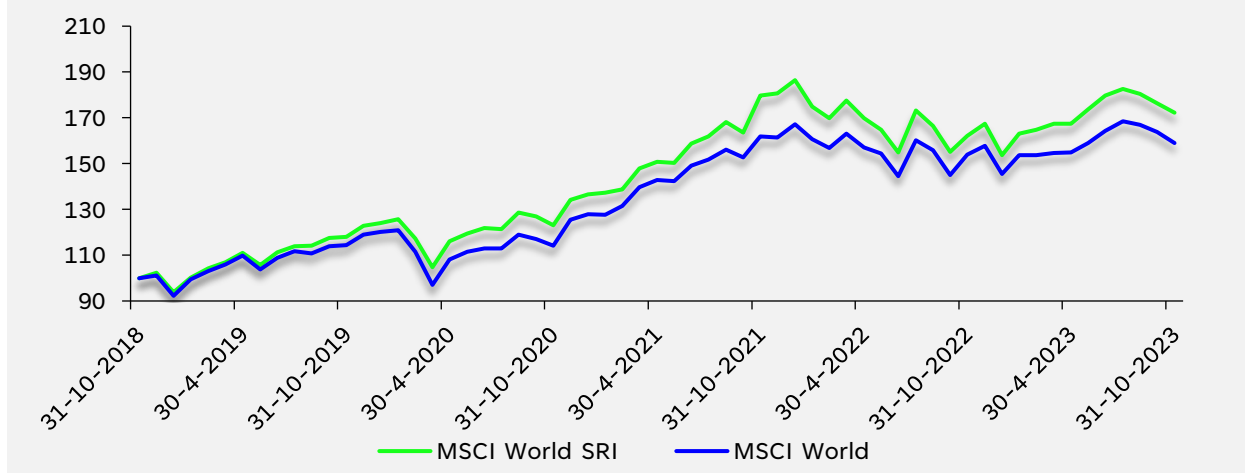
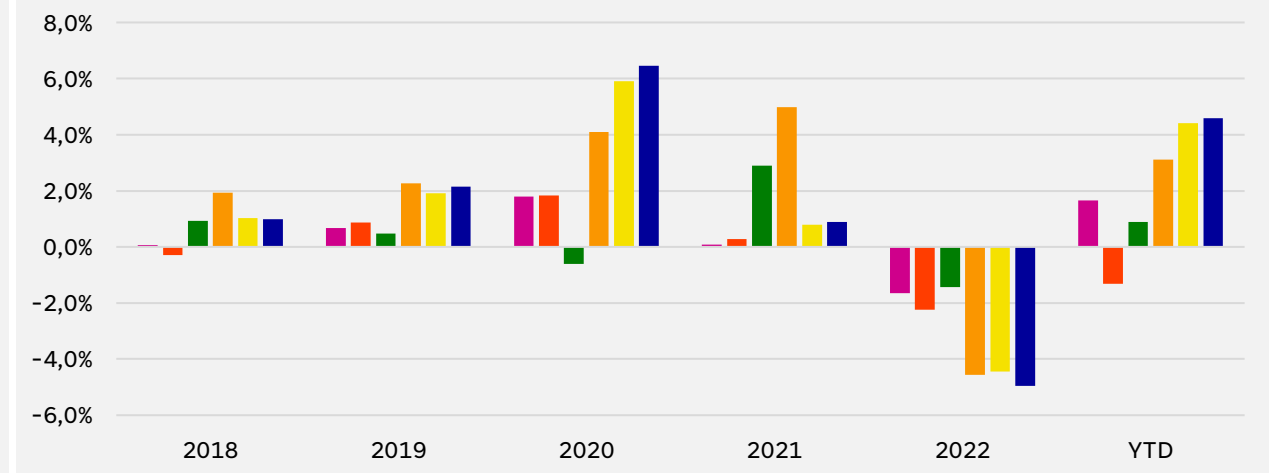


# Rendementen ESG-benchmarks versus reguliere benchmarks

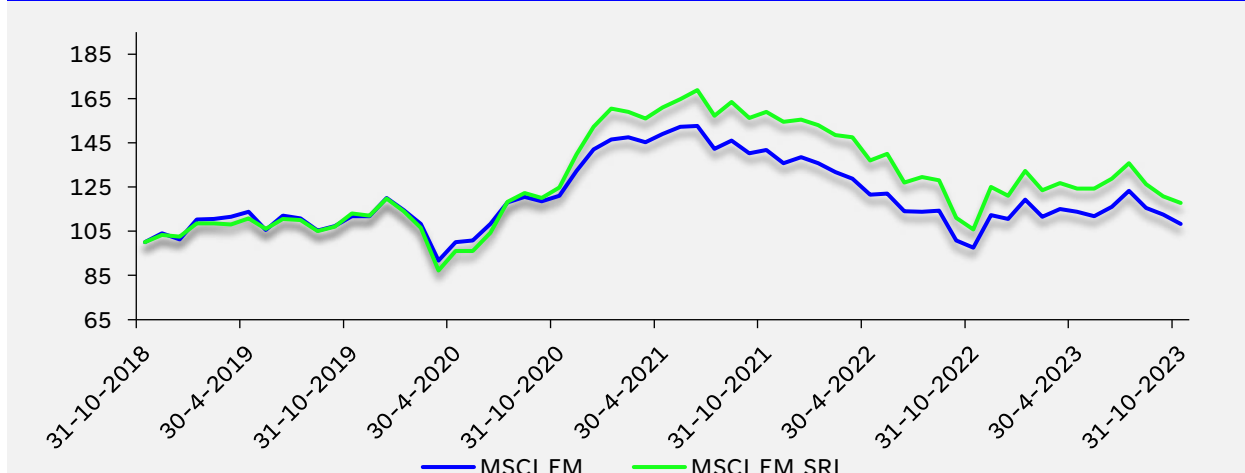
t/m 31-10-2023

**Figuur 1: Aandelen ontwikkelde landen**


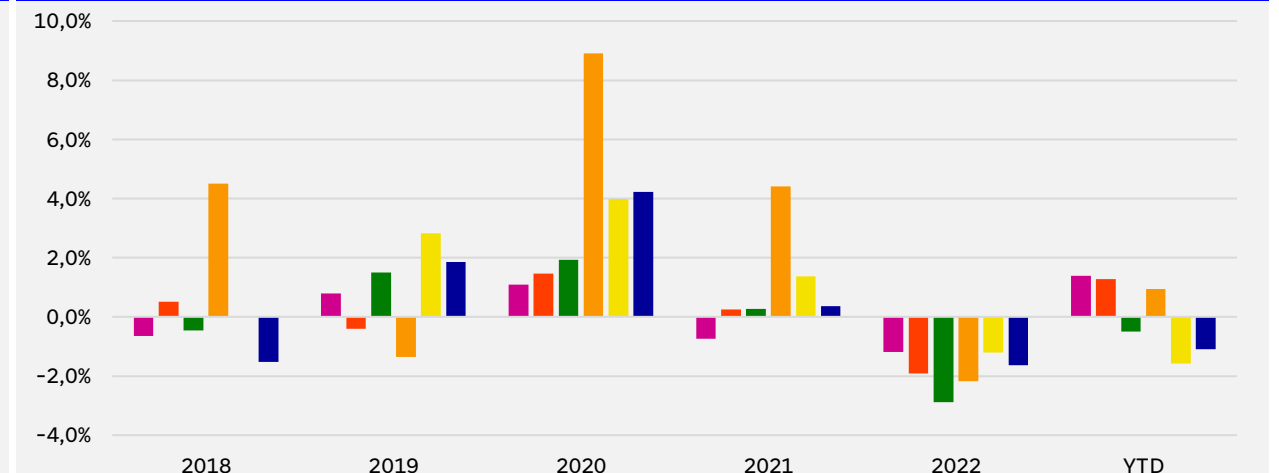
Rendement	M	1Y	3Y	5Y	Volatiliteit	3Y	5Y
ESG	-2,4%	6,2%	11,8%	11,5%		16,3%	16,4%
Regulier	-2,9%	3,3%	11,7%	9,7%		14,9%	16,3%
Delta	0,4%	2,9%	0,2%	1,7%		1,4%	0,2%

**Figuur 2: ESG Varianten t.o.v. reguliere MSCI World**


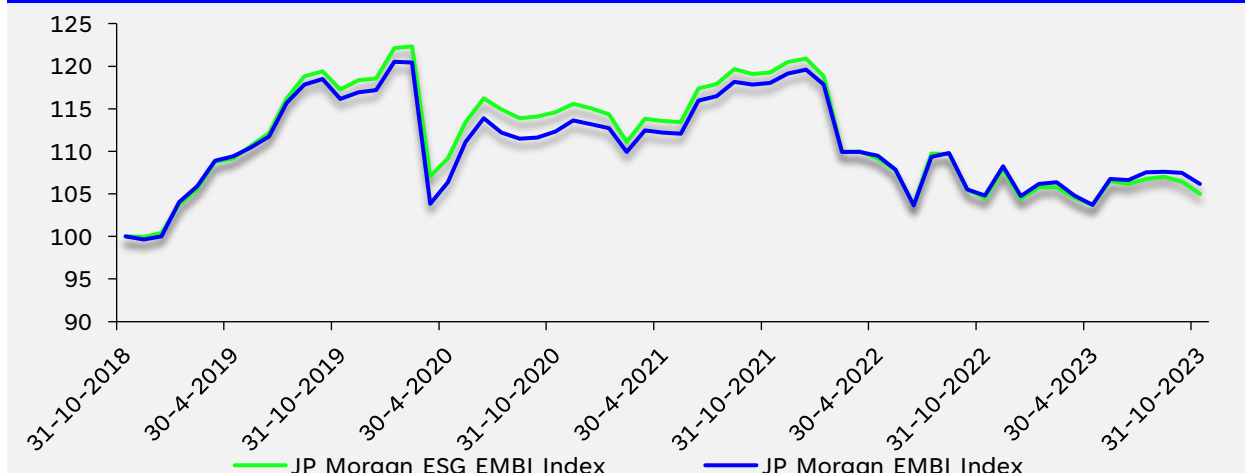
■ MSCI World ESG Screened	■ MSCI World ESG Enhanced Focus
■ MSCI World ESG Leaders	■ MSCI World SRI
■ MSCI World Climate Change CTB	■ MSCI World Climate Change PAB

**Figuur 3: Aandelen opkomende landen**


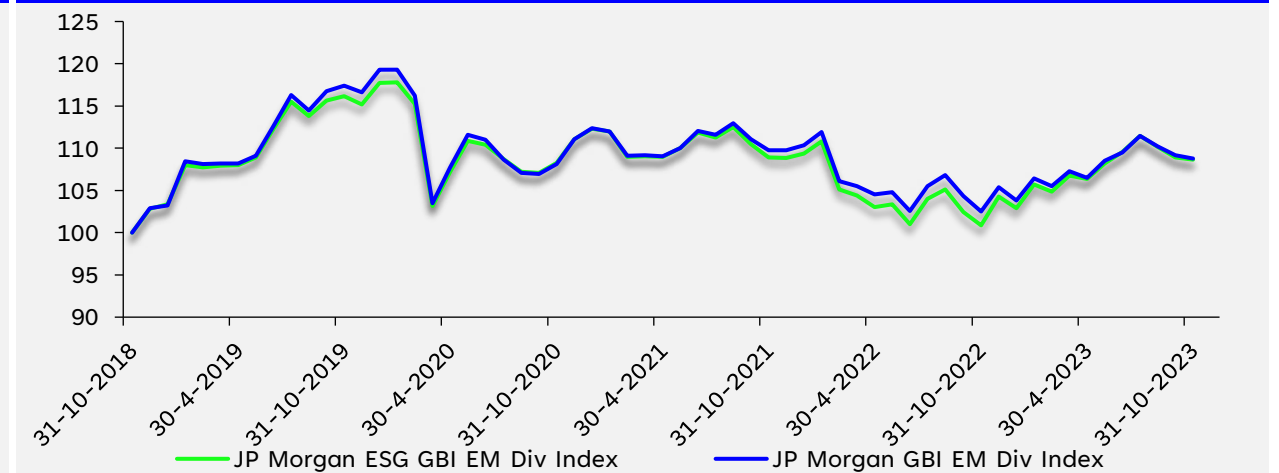
Rendement	M	1Y	3Y	5Y	Volatiliteit	3Y	5Y
ESG	-2,5%	11,5%	-1,9%	3,3%		21,3%	21,6%
Regulier	-3,9%	10,8%	-3,7%	1,6%		18,0%	18,9%
Delta	1,4%	0,7%	1,8%	1,7%		3,3%	2,7%

**Figuur 4: ESG Varianten t.o.v. reguliere MSCI EM**


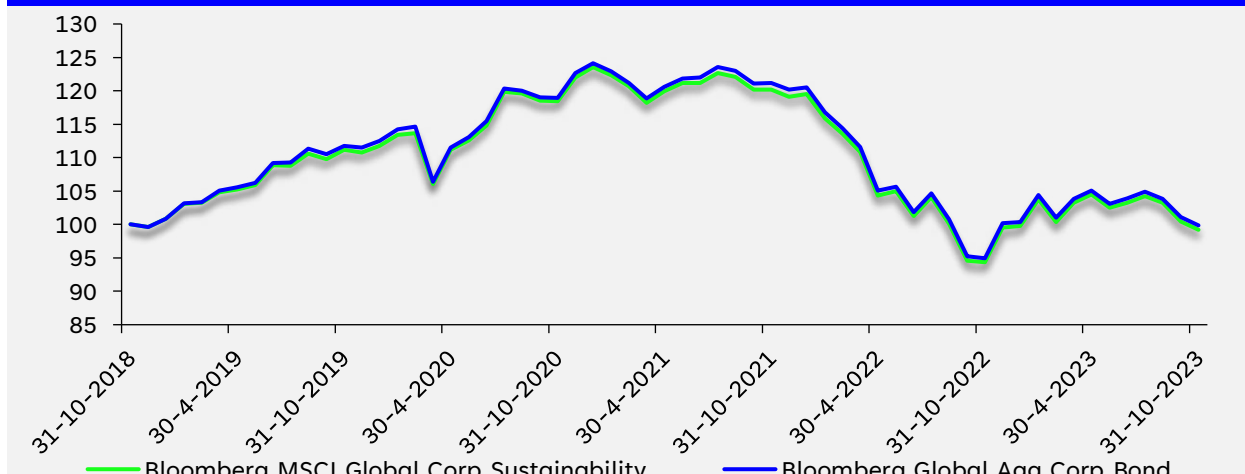
■ MSCI EM ESG Screened	■ MSCI EM ESG Enhanced Focus
■ MSCI EM ESG Leaders	■ MSCI EM SRI
■ MSCI EM Climate Change CTB	■ MSCI EM Climate Change PAB

**Figuur 5: EMD HC**


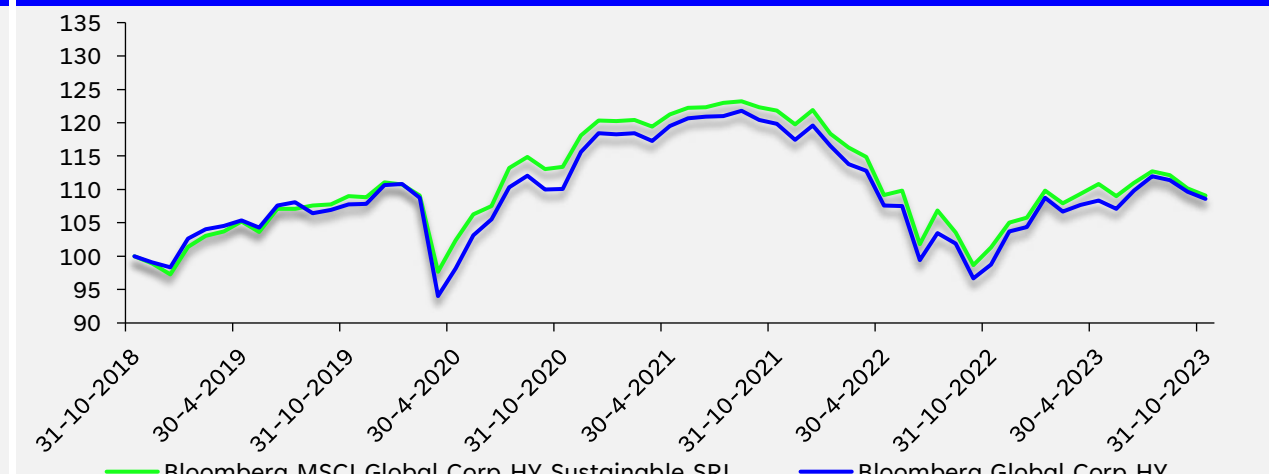
Rendement	M	1Y	3Y	5Y	Volatiliteit	3Y	5Y
ESG	-1,4%	0,4%	-2,9%	1,0%		8,0%	9,4%
Regulier	-1,2%	1,3%	-1,9%	1,2%		7,8%	9,7%
Delta	-0,2%	-0,9%	-1,0%	-0,2%		0,3%	-0,3%

**Figuur 6: EMD LC**


Rendement	M	1Y	3Y	5Y	Volatiliteit	3Y	5Y
ESG	-0,2%	7,8%	0,1%	1,7%		6,3%	8,1%
Regulier	-0,4%	6,1%	0,2%	1,7%		6,1%	8,3%
Delta	0,1%	1,6%	-0,1%	0,0%		0,2%	-0,2%

**Figuur 7: Bedrijfsobligaties Global**


Rendement	M	1Y	3Y	5Y	Volatiliteit	3Y	5Y
ESG	-1,2%	5,1%	-5,7%	-0,2%		8,7%	8,4%
Regulier	-1,2%	5,2%	-5,7%	0,0%		8,7%	8,5%
Delta	0,0%	0,0%	-0,1%	-0,1%		0,0%	-0,1%

**Figuur 8: High yield Global**


Rendement	M	1Y	3Y	5Y	Volatiliteit	3Y	5Y
ESG	-1,0%	7,6%	-1,3%	1,7%		9,0%	9,7%
Regulier	-0,9%	10,0%	-0,4%	1,7%		9,2%	10,6%
Delta	-0,1%	-2,3%	-0,9%	0,1%		-0,2%	-0,9%

- Figuur 1: MSCI World Index en MSCI World SRI Index, in EUR unhedged.
- Figuur 2: Verschil in rendement van verschillende MSCI World ESG varianten t.o.v. MSCI World Index
- Figuur 3: MSCI Emerging Markets Index en MSCI Emerging Markets SRI Index, in USD unhedged.
- Figuur 4: Verschil in rendement van verschillende MSCI EM ESG varianten t.o.v. MSCI EM Index
- Figuur 5: JPMorgan EMBI Global Diversified en JPMorgan ESG EMBI Global Diversified, in EUR unhedged.
- Figuur 6: JPMorgan GBI-EM GIB Diversified (LC) Index en JPMorgan ESG GBI-EM GIB Diversified (LC) Index, in EUR unhedged.
- Figuur 7: Bloomberg Global Aggregate Corporate Bond Index en Bloomberg MSCI Global Corporate Sustainability Index, in USD, unhedged.
- Figuur 8: Bloomberg Global Corporate High Yield Index en Bloomberg MSCI Global Corporate High Yield Sustainable SRI Index, in USD, unhedged.

Mocht u vragen hebben of mocht u zich willen aanmelden voor de wekelijkse e-mailservice, dan kunt u ons bereiken via [investments@sprenkels.nl](mailto:investments@sprenkels.nl) of [www.sprenkels.nl](http://www.sprenkels.nl)